



RouteTrak™

A powerful and cost effective solution for GPS-based vehicle history tracking that helps you increase fleet efficiency and save fuel

Gaining control over field operations is a challenge facing most organizations. RouteTrak from LinksPoint is a powerful solution that provides visibility into field activity using the Global Positioning System (GPS) without the expense of wide area wireless connectivity. RouteTrak gives you even greater flexibility and cost savings because it runs on the same mobile computer you use for other field applications.

RouteTrak combines a GPS receiver with a mobile computer to collect the travel history of vehicles or personnel. A "breadcrumb trail" of GPS points is captured and stored on the handheld computer when the vehicle is on the road and then uploaded for analysis when the vehicle returns to the office or depot. Travel history can be displayed at any point in time after the route has occurred and been uploaded. Extensive map and text-based reporting is available including, actual route taken, stop locations and times, vehicle speed, actual miles traveled and more. RouteTrak is designed for easy integration with third-party applications such as route optimization to show planned versus actual travel in the field.

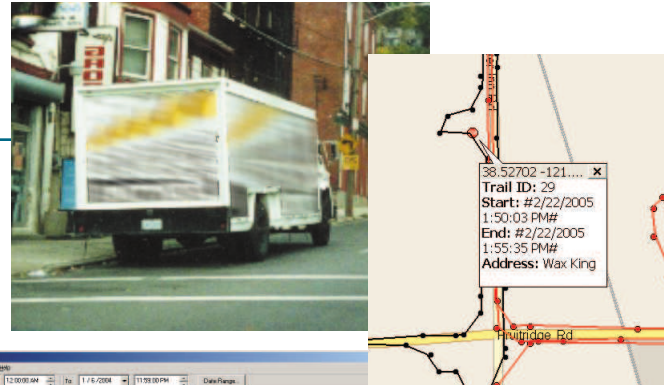
RouteTrak is the perfect solution if you need to track vehicle activity, but don't want the added cost of real-time tracking.

Features

- Handheld captures detailed vehicle travel history in the field
- Data collection can be invisible to driver
- Upload "breadcrumb trail" by wireless LAN or batch
- Analyze vehicle activity as text or on map display
- Reports include Stops, Miles Traveled, Speed & more
- Analyze "planned versus actual" routes

Benefits

- Increase accountability and productivity of field personnel
- Document actual stops made
- Analyze routes and identify areas of improvement
- Reduce or eliminate out of route travel
- Reduce speeding and unsafe driver behavior
- Add more stops per day
- Save on fuel costs
- Improve customer service
- Reduce driver and administrative overtime
- Low cost solution does not require wireless data airtime



Date	Time	Vehicle	Stop Address
2/22/05	1:50:08 pm	38161	418 S. Broadway, San Jose, CA 95128
2/22/05	1:50:28 pm	38160	418 S. Broadway, San Jose, CA 95128
2/22/05	1:51:10 pm	38160	418 S. Broadway, San Jose, CA 95128
2/22/05	1:51:47 pm	38160	418 S. Broadway, San Jose, CA 95128
2/22/05	1:52:17 pm	38160	418 S. Broadway, San Jose, CA 95128
2/22/05	1:52:38 pm	38160	418 S. Broadway, San Jose, CA 95128
2/22/05	1:52:58 pm	38160	418 S. Broadway, San Jose, CA 95128
2/22/05	1:53:18 pm	38160	418 S. Broadway, San Jose, CA 95128
2/22/05	1:53:38 pm	38160	418 S. Broadway, San Jose, CA 95128
2/22/05	1:53:58 pm	38160	418 S. Broadway, San Jose, CA 95128
2/22/05	1:54:18 pm	38160	418 S. Broadway, San Jose, CA 95128
2/22/05	1:54:38 pm	38160	418 S. Broadway, San Jose, CA 95128
2/22/05	1:54:58 pm	38160	418 S. Broadway, San Jose, CA 95128
2/22/05	1:55:18 pm	38160	418 S. Broadway, San Jose, CA 95128
2/22/05	1:55:35 pm	38160	418 S. Broadway, San Jose, CA 95128

Hardware Requirements

- Windows Mobile, Windows CE/Pocket PC computer
- GPS receiver/data logger
- Wireless LAN connectivity or batch synchronization cradle
- Server with MS SQL Server or MS Access
- Desktop computer running Windows for route analysis and reporting

For more information on RouteTrak, contact us at **203-853-4600** or email us at **sales@linkspoint.com**.

One Platform - Many Solutions

LinksPoint's solutions are built to give you the greatest return on your investment in mobile computing systems. **RouteTrak** leverages the Pocket PC operating system, allowing you to deploy multiple applications on one device, including:

- **LinksPoint's Field Force Navigator**

As well as custom and third-party applications such as:

- Route Accounting
- Direct Store Delivery
- Field Service
- Proof of Delivery
- Asset Tracking
- Inspection and Maintenance Applications
- Workflow Management
- Outage Management
- Field Asset Management
- Mobile Mapping/GIS
- Emergency Preparedness
- CRM Interface
- Location-Based Distribution