

# *GPSTLib*

# *Installation Guide*

**An Installation Guide for the LinksPoint GPS Library**  
For Microsoft® Windows 95/98/ME/NT/CE/2000/XP and Palm OS Operating Systems

**Version 2.0**

Copyright © 2001-2002 LinksPoint Inc.

1 Selleck Street, Suite 330

Norwalk, CT 06855

Tel: (203) 853-4600

Fax: (203) 838-1688

<http://www.linkspoint.com>

[support@linkspoint.com](mailto:support@linkspoint.com)

## Copyright

©2001-2002 Links Point, Inc. All rights reserved. No part of this publication may be reproduced, stored in a retrieval system, or transmitted in any form or by any means, electronic, mechanical, photocopying, recording or otherwise, without the prior written consent of LinksPoint, Inc., 1 Selleck St., Suite 330, Norwalk, CT 06855.

## Trademarks

Windows, Windows 95, Windows 98, Windows ME, Windows CE, Windows NT, Windows 2000 and Windows XP are registered trademarks of Microsoft Corporation in the U.S. and other countries used under license.

Palm OS and HotSync are trademarks of Palm, Inc. or its subsidiaries.

All other product and brand names may be trademarks or registered trademarks of their respective owners.

The Palm OS version of the GPS Library requires that the [MathLib 1.1](#) library be installed. The MathLib Information Page can be found at the following site:

<http://www.radiks.net/~rhuebner/mathlib.html>.

## Table of Contents

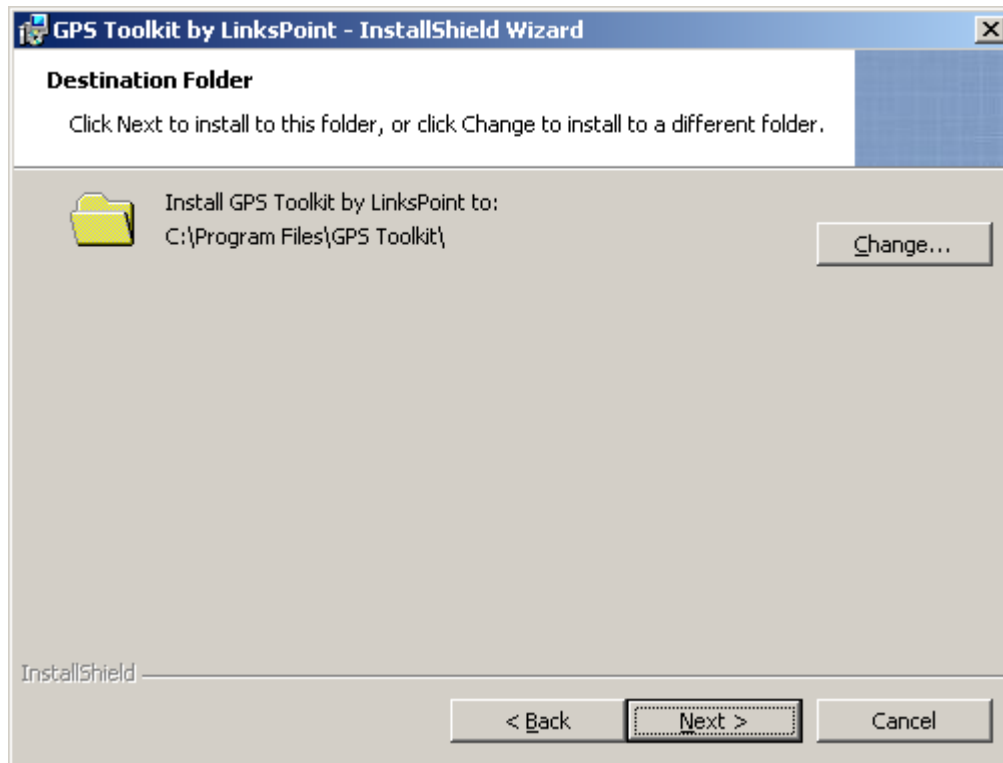
<b>1</b>	<b><i>Installing the GPSToolkit</i></b>	<b>4</b>
1.1	Selecting a location for the toolkit files	4
1.2	Choosing a platform to install	5
<b>2</b>	<b><i>Using the GPSToolkit</i></b>	<b>7</b>
2.1	Building applications with the GPS Toolkit	7
2.2	Installing and running applications built with the GPS Toolkit	7

## 1 Installing the GPSToolkit

To run the GPS Toolkit Installation, run the SETUP.EXE program from the drive or path where the setup files are located on your system. For example, D:\SETUP.EXE if they are on a CDROM if your CDROM is drive D:.

### 1.1 Selecting a location for the toolkit files

Setup will ask you where you would like to install the toolkit files.



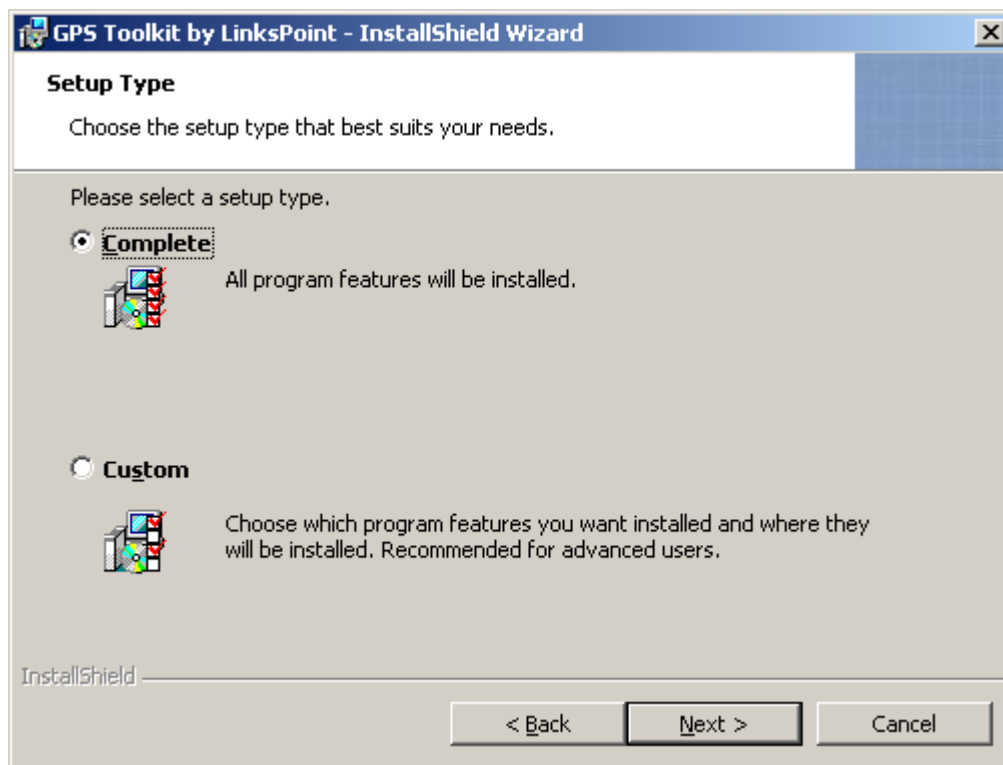
Select the path for the toolkit files. Setup defaults to “C:\Program Files\GPS Toolkit” directory. If this path is used, the following paths will be created depending on the toolkit platforms that are selected for installation.

C:\Program Files\GPS Toolkit  
C:\Program Files\GPS Toolkit\bin  
C:\Program Files\GPS Toolkit\bin\PalmOS  
C:\Program Files\GPS Toolkit\bin\WCE211  
C:\Program Files\GPS Toolkit\bin\WCE211\MS Palm Size PC  
C:\Program Files\GPS Toolkit\bin\WCE211\MS Palm Size PC\MIPS  
C:\Program Files\GPS Toolkit\bin\WCE211\MS Palm Size PC\SH3  
C:\Program Files\GPS Toolkit\bin\WCE300  
C:\Program Files\GPS Toolkit\bin\WCE300\MS Pocket PC  
C:\Program Files\GPS Toolkit\bin\WCE300\MS Pocket PC\ARM

C:\Program Files\GPS Toolkit\bin\WCE300\MS Pocket PC\MIPS  
C:\Program Files\GPS Toolkit\bin\WCE300\MS Pocket PC\SH3  
C:\Program Files\GPS Toolkit\bin\WCE300\MS Pocket PC\x86em  
C:\Program Files\GPS Toolkit\bin\Win32  
C:\Program Files\GPS Toolkit\inc  
C:\Program Files\GPS Toolkit\lib\PalmOS  
C:\Program Files\GPS Toolkit\lib\WCE211  
C:\Program Files\GPS Toolkit\lib\WCE211\MS Palm Size PC  
C:\Program Files\GPS Toolkit\lib\WCE211\MS Palm Size PC\MIPS  
C:\Program Files\GPS Toolkit\lib\WCE211\MS Palm Size PC\SH3  
C:\Program Files\GPS Toolkit\lib\WCE300  
C:\Program Files\GPS Toolkit\lib\WCE300\MS Pocket PC  
C:\Program Files\GPS Toolkit\lib\WCE300\MS Pocket PC\ARM  
C:\Program Files\GPS Toolkit\lib\WCE300\MS Pocket PC\MIPS  
C:\Program Files\GPS Toolkit\lib\WCE300\MS Pocket PC\SH3  
C:\Program Files\GPS Toolkit\lib\WCE300\MS Pocket PC\x86em  
C:\Program Files\GPS Toolkit\lib\Win32  
C:\Program Files\GPS Toolkit\inc

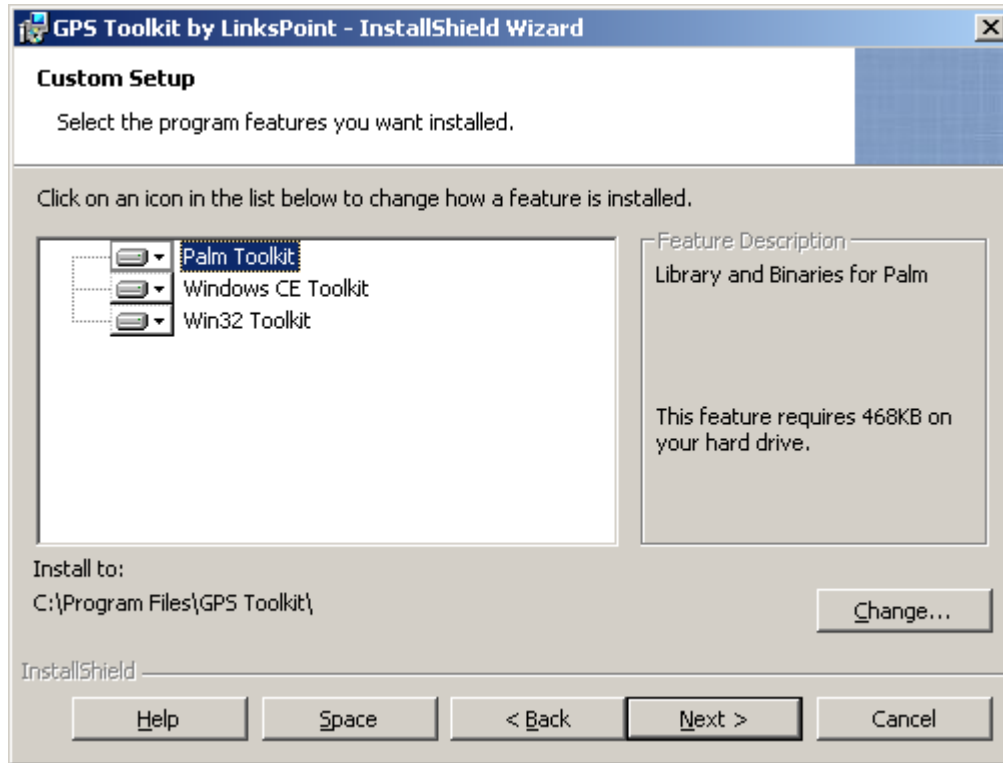
## 1.2 Choosing a platform to install

The GPS Toolkit Installation allows for installing components required for building applications for different Operating System platforms. The GPS Toolkit currently supports the Palm OS, Windows CE (Version 2.11 for palm Size PCs and version 3.0 for the Pocket PC), and the Win32 (Windows 95/98/ME/NT/2000/XP) Operating Systems.



## LinksPoint GPS Library Installation Guide

Select “Complete” to install the toolkits for all platforms or select “Custom” to choose the specific platforms for which you would like to build applications and select Next. If you choose “Custom”, select which platforms you would like from the screen below and select Next.



Setup will now install the appropriate toolkits.

## 2 Using the GPSToolkit

### 2.1 Building applications with the GPS Toolkit

Using C or C++ to develop your applications, you would include the `gpsapi.h` header file located in the `INC` subdirectory of the toolkit installation. You should add this path to the list of include directories for your project in the compiler's development environment.

You will also need to link your application with `gpslib.lib` (and `sirflib.lib` for the Palm OS platform) for the specific platform you are using. For all windows platforms, the library is in the form of a dynamic link library that will need to be installed with your application. For the Palm OS platform, the libraries are static libraries that are included in your application. The `gpslib.lib` file is located in the following directories for the specific platforms:

<b>Palm OS:</b>	“lib\PalmOS” directory
<b>Windows 95/98/ME/NT/2000/XP:</b>	“lib\Win32” directory
<b>Windows CE:</b>	Depending on the target device: “lib\WCE211\MS Palm Size PC\MIPS” directory “lib\WCE211\MS Palm Size PC\SH3” directory “lib\WCE300\MS Pocket PC\ARM” directory “lib\WCE300\MS Pocket PC\MIPS” directory “lib\WCE300\MS Pocket PC\SH3” directory “lib\WCE300\MS Pocket PC\x86em” directory

**Palm OS:** When compiling the application using Metrowerks CodeWarrior for Palm OS Platform, the project should be a multi-segmented project and both `gpslib.lib` and `sirflib.lib` should be included and placed in separate segments.

### 2.2 Installing and running applications built with the GPS Toolkit

#### **Palm OS:**

The GPS toolkit requires the installation of the MathLib library, `mathlib.prc`, which must be installed on the target device before the toolkit can be used successfully. `Mathlib.prc` will need to be shipped and installed along with any application that you create that is using the GPS Toolkit. Your application and `mathlib.prc` can be installed using the Palm Desktop software by selecting Install and adding `mathlib.prc` and your application.

#### **Windows 95/98/ME/NT/2000/XP:**

The GPS toolkit for Windows is a self-contained dynamic link library named `gpslib.dll`. This file should be installed in the same directory as your application, or it can be installed in the Windows System directory. This library can be found in the “bin\Win32” subdirectory of the toolkit installation.

#### **Windows CE:**

The GPS toolkit for Windows is a dynamic link library named `gpslib.dll` that also requires the Microsoft Foundation Classes library for Windows CE. The binary libraries

## LinksPoint GPS Library Installation Guide

are specific to version and chipset of the Windows CE device for which they are being installed. For example, if you were building an application targeting a Palm Size PC with a MIPS processor, you would install the `gpslib.dll` and `mfcce211.dll` libraries found in the “WCE211\Ms Palm Size PC\MIPS” subdirectory of the toolkit installation into the device’s “\Windows” directory.

# LinksPoint GPS Library Installation Guide